








0606

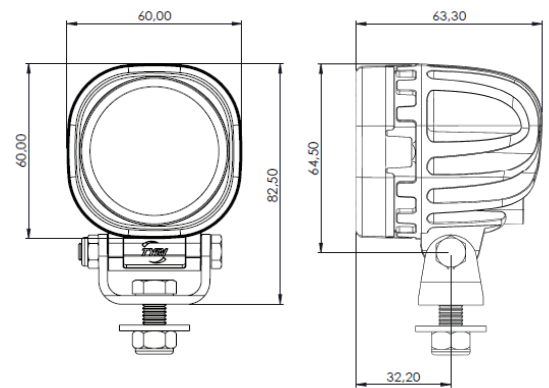
PRODUCT INFORMATION:

The TYRI 0606 LED work light may be only 6 cm in width and height, but with its 720 effective lumen output, it really shines bright. When you are looking for a small compact work light for applications such as engine compartments, ATV's, speedboats or small compact machinery, the TYRI 0606 is the smart choice.

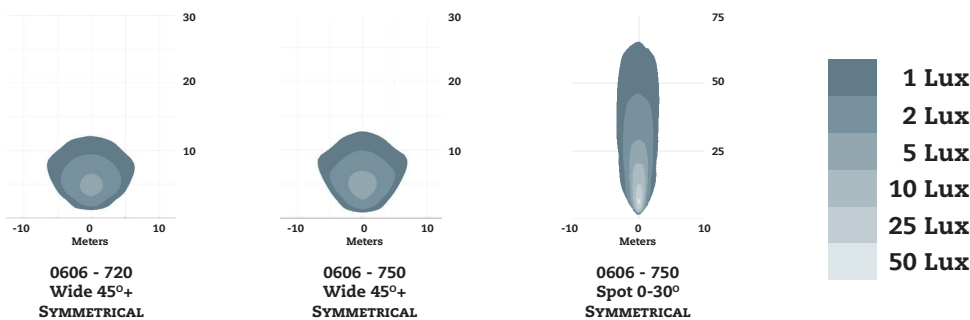


-  EMC TESTED
-  IP69K
-  VIBRATION TESTED
-  SALT SPRAY TESTED
-  UL RATED OPTIONAL

- Operating Temp:** -40° to 75°C
- Light Pattern:** Symmetric, Spot
- Lens Material:** Plastic
- Housing:** Cast Aluminium
- Mounting Options:** Hanging, Standing, Side
- Connector:** (DT04-2P) Built in
- Weight:** 280 g / 0,62 lb



LIGHT BEAM PATTERNS:



LUMEN OUTPUT		Number of LED's	VOLTAGE		AMP DRAW		Power (Watts)	Colour Temp	CRI	EMC EN55025/ CISPR25 Class	IP69K	Vibration 5-2000hZ 3 Axis	Salt Spray ASTMB117	UL Rated Optional
Theoretical	Effective		Machine	Operating Range	12 Volts	24 Volts								
1000	720	1	12-48	9 60	1.2 0.6	13	5700	70	4	●	8 Grms	●		
1000	750	6	12	9 16	1.1	13.2	5700	70	5	●	8 Grms	●	●	
1000	750	6	24	18 32	0.55	13.2	5700	70	5	●	8 Grms	●	●	